

Objectives:

- Students will divide positive integers from the multiplication table without remainders, as evidenced by them passing one-minute quizzes.
- Students will convert decimals to fractions by shifting the decimal point, as evidenced by them completing a warm-up worksheet where they do so.
- Students will group their daily activities into categories and graph them in a pie chart, as evidenced by them completing the corresponding exhibition worksheets.

Materials:

- Unit calendar transparency
- “Minute Quiz 6-2” for each student
- “Warm-up 6-2” for each student
- “Sample Exhibition Project” for each table (class set)
- “Activities by Category” handout for each student
- “How to Make a Pie Chart Graph in Excel” handout for each table (class set)

Do Now:

- Park stuff
- Work on warm-up
- Get ready for minute quiz

Homework:

- 10 hours of ALEKS due Today
- Finish activity categories and pie chart.

Time	Activity
Before Bell	<p style="text-align: center;">AGENDA, DO NOW, AND WARM-UPS</p> <p>Write the agenda and the do now on the board. As students enter the classroom, shake their hands, give them a copy of the warm-up, and direct them to follow the directions listed for the “do now.”</p>
10 min	<p style="text-align: center;">MINUTE QUIZ, WARM-UP, AND ATTENDANCE</p> <p>Minute Quiz and Warm-up When the bell rings, quickly go around and put the minute quiz on each student’s desk, face down. Then, start everyone on the quiz at the same time and give everyone one minute. Students should work on the warm-up when they’re done with the minute quiz. After the minute is over, have a student collect the minute quizzes and give them to the teacher’s aide (TA) to grade.</p> <p>Attendance While students work on the warm-up, take attendance. After the allocated time is over, stamp warm-up and notes checkers.</p>
5 min	<p style="text-align: center;">ANNOUNCEMENTS</p> <p>ALEKS Ask students, <i>How many hours of ALEKS are due Today?</i> Point to the homework assignment that indicates the answer. <i>[Ten.]</i></p> <p>Unit Calendar Put up the unit calendar from last unit, since it contains everything up until the end of the school year. Explain to students what we’re doing each day for the exhibition, when we’re doing review for the final, and when the final exam is.</p>
25 min	<p style="text-align: center;">EXHIBITION: CATEGORIES & PIE CHARTS</p> <p>Hand out the sample exhibitions (“A Day in the Life of Mr. Wong”) and remind students that last time, they should’ve finished their time logs, which show everything they did for twenty-four hours. Today, they will take that information and group them into categories. Use the sample exhibition to illustrate this. Afterwards, they will make pretty pie charts on the computer. So, their two tasks today for note points are: 1) group activities into categories; and 2) make a pie chart. Pass out the “activities by categories” worksheets so that students can do this. When they finish, give them a copy of “how to make a pie chart graph in excel” for use in class. When students finish, stamp and collect their warm-ups & notes checkers.</p>

Lesson 6-2 – Exhibition Categories & Pie Charts

35 min	<p style="text-align: center;">ALEKS</p> <p>During this time, everyone should be working on ALEKS. If they did not finish their activity categories or pie charts, they should finish them for homework. Use this student work time to return graded homework.</p>
5 min	<p style="text-align: center;">CLEAN UP</p> <p>Students must check the laptops with the teacher or the TA before putting them away. After putting the laptops away, students should pack up, sit in their seats, and wait to be dismissed by the teacher (not by the bell). Make sure students push in their chairs as they leave.</p>

Solve the following division problems. You have exactly one minute!

$84 \div 12 =$

$12 \div 6 =$

$24 \div 2 =$

$25 \div 5 =$

$72 \div 6 =$

$49 \div 7 =$

$30 \div 5 =$

$4 \div 4 =$

$45 \div 5 =$

$12 \div 6 =$

$56 \div 7 =$

$121 \div 11 =$

Solve the following division problems. You have exactly one minute!

$84 \div 12 =$

$12 \div 6 =$

$24 \div 2 =$

$25 \div 5 =$

$72 \div 6 =$

$49 \div 7 =$

$30 \div 5 =$

$4 \div 4 =$

$45 \div 5 =$

$12 \div 6 =$

$56 \div 7 =$

$121 \div 11 =$

Solve the following division problems. You have exactly one minute!

$84 \div 12 =$

$12 \div 6 =$

$24 \div 2 =$

$25 \div 5 =$

$72 \div 6 =$

$49 \div 7 =$

$30 \div 5 =$

$4 \div 4 =$

$45 \div 5 =$

$12 \div 6 =$

$56 \div 7 =$

$121 \div 11 =$

Solve the following division problems. You have exactly one minute!

$132 \div 11 =$

$21 \div 7 =$

$7 \div 1 =$

$20 \div 2 =$

$18 \div 9 =$

$40 \div 10 =$

$84 \div 7 =$

$88 \div 11 =$

$24 \div 3 =$

$110 \div 11 =$

$35 \div 7 =$

$90 \div 10 =$

Solve the following division problems. You have exactly one minute!

$132 \div 11 =$

$21 \div 7 =$

$7 \div 1 =$

$20 \div 2 =$

$18 \div 9 =$

$40 \div 10 =$

$84 \div 7 =$

$88 \div 11 =$

$24 \div 3 =$

$110 \div 11 =$

$35 \div 7 =$

$90 \div 10 =$

Solve the following division problems. You have exactly one minute!

$132 \div 11 =$

$21 \div 7 =$

$7 \div 1 =$

$20 \div 2 =$

$18 \div 9 =$

$40 \div 10 =$

$84 \div 7 =$

$88 \div 11 =$

$24 \div 3 =$

$110 \div 11 =$

$35 \div 7 =$

$90 \div 10 =$

Solve the following division problems. You have exactly one minute!

$16 \div 8 =$

$99 \div 11 =$

$88 \div 11 =$

$2 \div 2 =$

$32 \div 4 =$

$80 \div 10 =$

$4 \div 4 =$

$50 \div 10 =$

$3 \div 3 =$

$20 \div 5 =$

$27 \div 9 =$

$8 \div 4 =$

Solve the following division problems. You have exactly one minute!

$16 \div 8 =$

$99 \div 11 =$

$88 \div 11 =$

$2 \div 2 =$

$32 \div 4 =$

$80 \div 10 =$

$4 \div 4 =$

$50 \div 10 =$

$3 \div 3 =$

$20 \div 5 =$

$27 \div 9 =$

$8 \div 4 =$

Solve the following division problems. You have exactly one minute!

$16 \div 8 =$

$99 \div 11 =$

$88 \div 11 =$

$2 \div 2 =$

$32 \div 4 =$

$80 \div 10 =$

$4 \div 4 =$

$50 \div 10 =$

$3 \div 3 =$

$20 \div 5 =$

$27 \div 9 =$

$8 \div 4 =$

Turn each decimal into a percent by multiplying by 100 (shift the decimal point to the right by two).

Decimal	Percent
0.12	12%
0.05	
0.25	
1.2	
0.10	
0.015	1.5%
0.102	
2.08	
0.01	
1.0	
4.5	

Decimal	Percent
1.3	130%
0.3	
0.75	
0.07	
0.5	
0.074	
2.1	
0.84	
0.1	
0.001	
0.45	

Turn each decimal into a percent by multiplying by 100 (shift the decimal point to the right by two).

Decimal	Percent
0.12	12%
0.05	
0.25	
1.2	
0.10	
0.015	1.5%
0.102	
2.08	
0.01	
1.0	
4.5	

Decimal	Percent
1.3	130%
0.3	
0.75	
0.07	
0.5	
0.074	
2.1	
0.84	
0.1	
0.001	
0.45	

“A Day in the Life”
Activities by Category

Category Name:

Activity	Number of Minutes
Total Number of Minutes:	
Ratio:	
Decimal:	
Percent:	

Category Name:

Activity	Number of Minutes
Total Number of Minutes:	
Ratio:	
Decimal:	
Percent:	

Category Name:

Activity	Number of Minutes
Total Number of Minutes:	
Ratio:	
Decimal:	
Percent:	

Category Name:

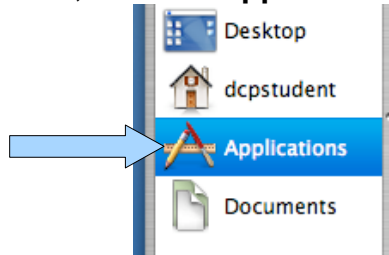
Activity	Number of Minutes
Total Number of Minutes:	
Ratio:	
Decimal:	
Percent:	

“A Day in the Life”
How to Make a Pie Chart Graph in Excel

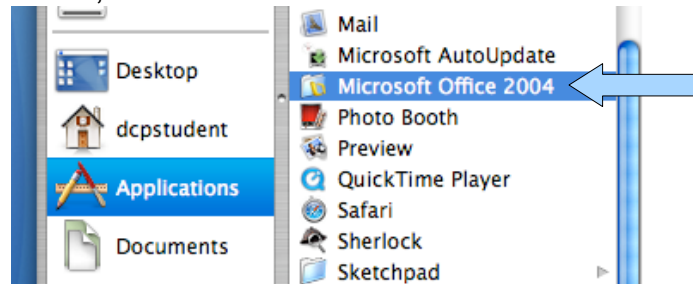
1. On the “dock,” click on the **finder** icon.



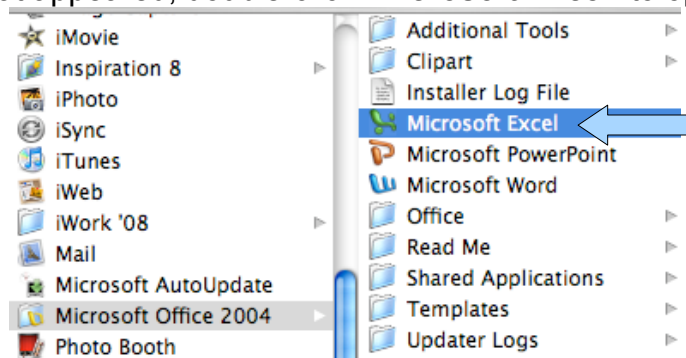
2. In the window that appears, click on “**Applications**”.



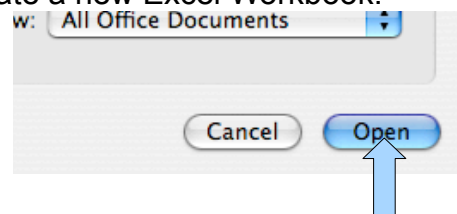
3. In the list of applications, scroll down and click “**Microsoft Office 2004**”.



4. In the column that appeared, double-click “**Microsoft Excel**” to open it.



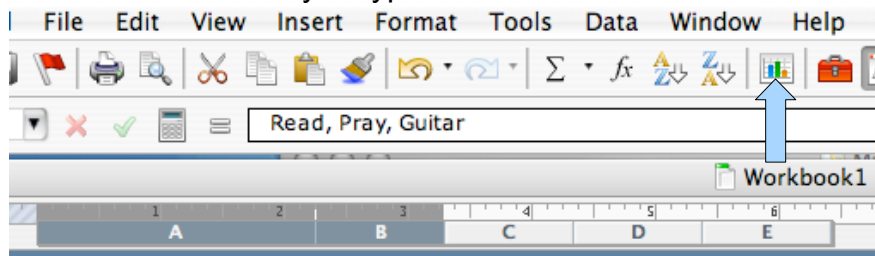
5. When Microsoft Excel opens, the “Project Gallery” window will open. Just click “**Open**” to create a new Excel Workbook.



- On the spreadsheet, type your **categories** into the first column and their **percentages** in the second column.

1	Read, Pray, Guitar	9.03%
2	Eat	8.33%
3	Driving	2.78%
4	DCP Work	43.02%
5	Get Dressed / Ready for Bed	3.48%
6	Sleep	33.33%
7		
8		
9		

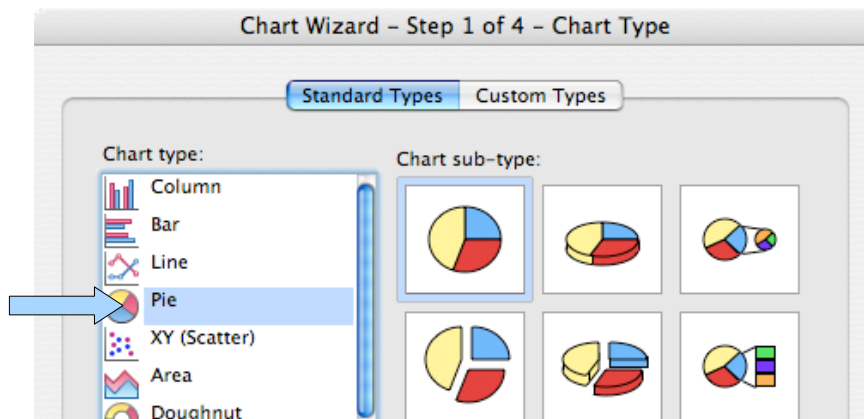
- Highlight** the information that you typed and click on the “**Chart Wizard**” icon.



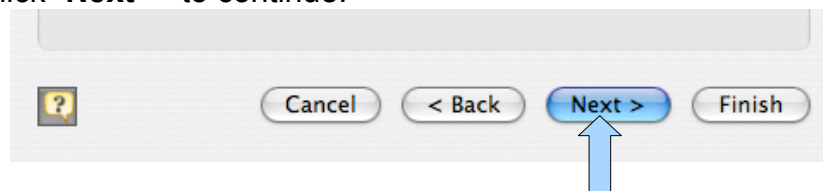
The screenshot shows the same spreadsheet as in step 6, but with the data range (rows 1-6, columns A-B) highlighted in blue. A blue arrow points to the left side of the highlighted area.

Read, Pray, Guitar	9.03%
Eat	8.33%
Driving	2.78%
DCP Work	43.02%
Get Dressed / Ready for Bed	3.48%
Sleep	33.33%

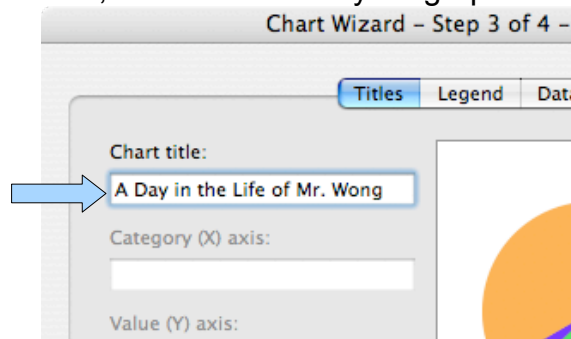
- In step 1 of the chart wizard, select “**Pie**” to create a pie chart graph. Then, click “**Next >**”.



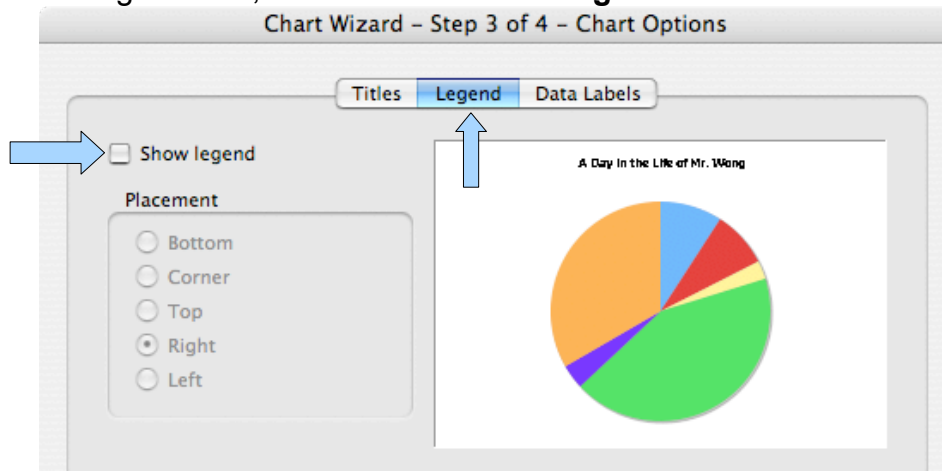
- In step 2 of the chart wizard, the correct data range should already be entered for you. So, click “**Next >**” to continue.



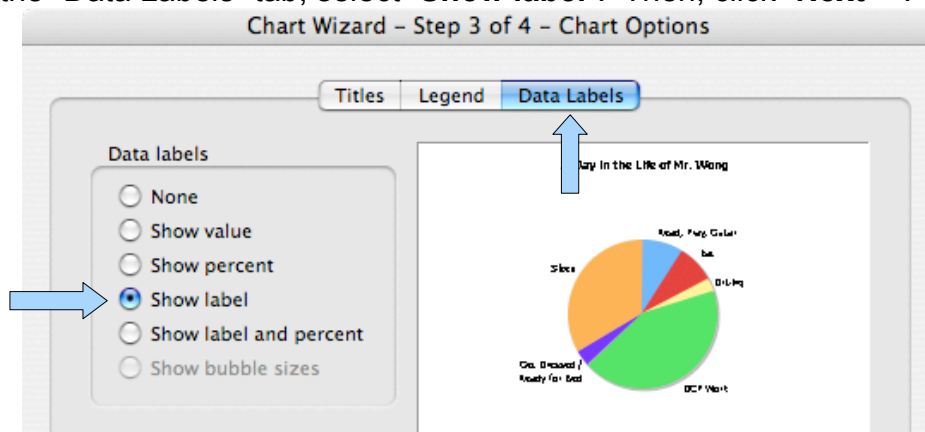
10. In the “Chart title” text box, enter the **title** of your graph.



11. Under the “Legend” tab, **uncheck** the “**Show legend**” checkbox.



12. Under the “Data Labels” tab, select “**Show label**”. Then, click “**Next >**”.



13. Select to place the chart as a **new sheet**. Then, click “**Finish**”.

